

Dev 5 • 88

The Flak 36 (88mm) Antiaircraft gun was used with great effect in the North Africa campaign. The Germans had many tactics to utilize the tank killing capabilities of this gun. One of the more common tactics was attacking the enemy and then retreating back, luring the enemy into range of these guns.



British Order of Battle

2x Rifle Half squad
2x Jeep

2 x Leaders -1
1 x Leader -2
5 x Rifle Squads
2 x Bren
2 x Satchel Charges
2 x Grenades
1 x Piat
5 x Half Tracks

7x M3A1 Honey
7x Cromwell
2x Light Barrage

German Order of Battle

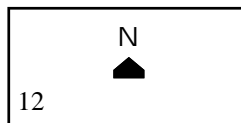
8 x Rifle 4-6-4
2 x Rifle 2-6-2
2 x Pnzs Gren 6-4-5
1 x Feldwebel 1-4-1
3 x Grenades
2 x MG23
1 x MG37

2x barbed wire
2x Sandbag

2x Flak 36 (88mm)
8x Panzer III
2x Panzer IV
1x Pak 40

MAP AND UNIT SETUP

German



British

British Setup

The British enter from the East side

German Setup

German setup in hex block A-F 3-5

If the sandbags are used to protect the Flak 36 (88mm) they do not need to be placed on the board until the Flak 36s are revealed (See special rules).

Victory Conditions.

The player with the most victory points wins.

A player gets 1 VP for each enemy AFV destroyed.

The British get 1 point for destroying the Pak 40.

The British player gets 2 points for destroying the first Flak 36 (88mm) and 3 points for destroying the second.

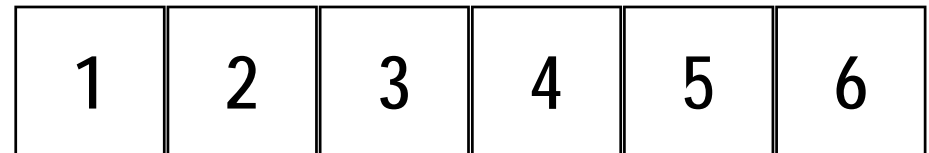
Special Scenario Rules.

The location of the two Flak 36s (88mm) should be noted before the game starts. They do not need to be placed onto the board until they are fired or an enemy unit comes within 4 hexes and LOS.

Game Length

6 Turns

British go first



Designer Notes: This Scenario is based on a report of a British Officer's first encounter with the German Flak 36s. The Flak 36 had an 88mm gun and used its long range to hit enemy tanks before they could be seen. The 88 special rule is meant to give a similar feel and emphasize the importance reconnaissance had in the desert.

Substitutions: Honey for Crusader , Cromwell for Matilda.

Comments and suggestions would be welcome.